



INSTALLATION INSTRUCTIONS

Item Description
Vehicle

Front Bumper
2005-2014 Tacoma Bumper
Install

DEMELLO-OFFROAD

www.demello-offroad.com

12785 Magnolia Ave
Riverside CA 92503 Unit #1

phone: 1-951-735-4417
fax: 1-951-735-4644

Kit contents

1 – front bumper	8 – 1/2in washers
6 – 1/2in x 4in bolts	2 – square backing plates
6 – nylock nuts	1 – installation guide
2- clamp brackets	

Tools recommended for installation

3/8" ratchet	10mm, 13mm, 14mm, 17mm 19mm sockets
Torque wrench (0-60 lb-ft)	Tin snips or cut off wheel grinder.
Flat head screwdriver	Pliers

Hint: You will need the assistance of two friends to hold the bumper in place during installation.



Bolt torque settings

6 – front frame assembly bolts 48 lb-ft where possible.	4 – side frame bolts 60 lb-ft
---------------------------------------------------------	-------------------------------

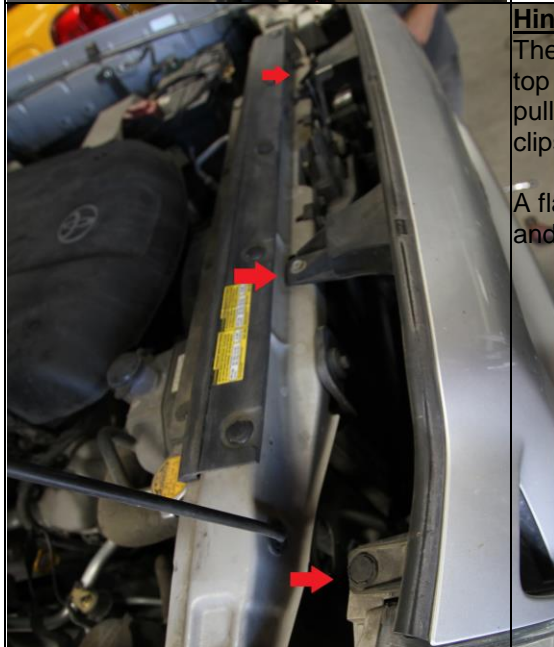
SRS airbag equipped vehicles

This bumper has not been tested with SRS Airbag equipped vehicles and may or may not adversely effect the operation of SRS Airbag systems. By installing this bumper you accept all responsibility and risks associated with the effect this bumper may have on the SRS Airbag system in your vehicle.

OEM bumper removal procedure



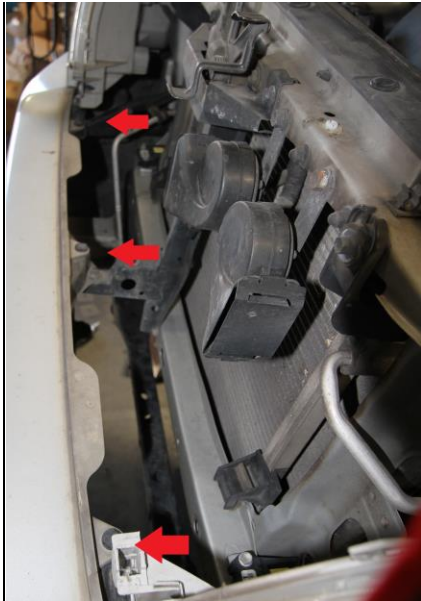
1.) Remove the two bolts securing the factory grill to the radiator support and the plastic clips on each side. .



Hint:

The grill is held on with clips from behind. Gently pull the top of the grill forward to release the top plastic clips. Then pull on the bottom of the grill to release the bottom plastic clips.

A flat head screw driver is helpful in releasing the middle and bottom clips.



2.) Remove the grill. Once the grill is removed there are 3 more clips exposed that need to be removed with a flat tip screw driver.



4.) Remove all of the snap rivets along the top of the bumper by gently prying upwards on the center button with a flat head screw driver. (FJC bumper shown but same method applies)

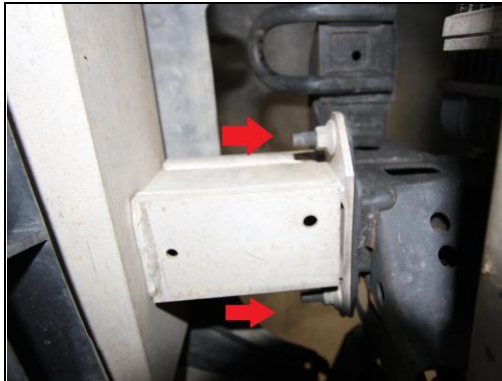


.5.) Use a 10mm socket on both sides to remove the bolt on the top of the bumper shown in the upper part of the picture. Also remove the the bolt in the clip below the first bolt. Repeat this process for both sides of the bumper.

6.) Remove front bumper cover from vehicle. Gently pry the outside lip of the bumper cover over the raised plastic mounting screw location inside the wheel well area.



6.) Remove the 2 main clips on the bottom of the bumper holding the bumper to the aluminum bash bar behind the bumper. On some models and years there will be additional clips. Be sure to remove all the clips before removing the bumper.



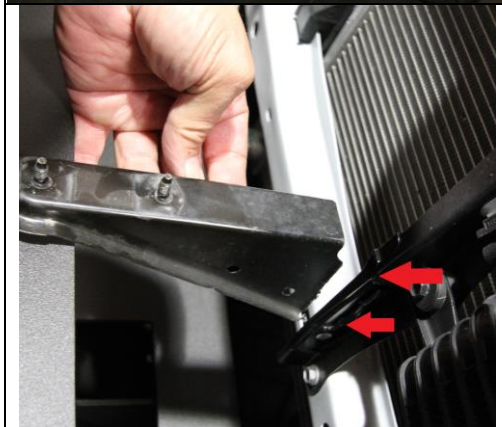
6.) Remove front bumper support bar by removing the 6 flange nuts. 3 on each side of the frame.

Note: Discard the 4 outer flange nuts as they are replaced by the nylock nuts contained in the install kit. The two inner ones will be re-used.



8.) Remove the three bolts holding the center grill support bracket. Then remove the center support.

Note: These parts are not used during the installation of your new front bumper.



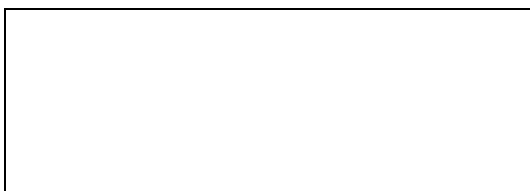
9.) If running a winch follow directions below. Once the center support bracket is removed you will need cut and remove the center. Be very careful cutting this piece off not to damage any surrounding components. (HINT we use a small cut off wheel to remove this piece but a pair of tin snips will work as well.) Note that on 2012 the removal of this piece is not necessary.



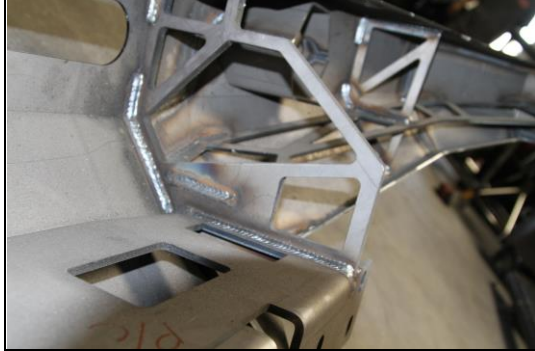
8.) Remove the three bolts holding the center grill support bracket. Then remove the center support.

Note: These parts are not used during the installation of your new Demello front bumper. On 2005-2011

Winch installation procedure (optional steps)



9.) Install winch. Place your winch on the mounting plate on the back of the bumper. Using the mounting hardware that was supplied with your winch, bolt the winch to the mounting plate. Please ensure that your winch mounting hardware is tightened according to the manufacturer's specifications.

	<p>Hint: We suggest that you install your winch on the bumper prior to mounting the bumper to your vehicle.</p> <p>10.) Install winch controls. There are miscellaneous brackets that you can drill and add your winch controls to. In some applications the winch controls can mount to the top of the winch if there is significant room. This is left up to your own best judgment.</p>
-----------------------------------------------------------------------------------	---------------------------------------------------------------------------------------------------------------------------------------------------------------------------------------------------------------------------------------------------------------------------------------------------------------------------------------------------------------------------------------------------

Bumper installation procedure

	<p>11.) With the help of two people hold the front bumper up to the front of your vehicle. Align the mounting holes in the bumper mount with the factory studs and install the factory flange bolts you removed earlier the bumper and clamp brackets. As shown in the picture.</p> <p>Note: Please use caution when mounting the front bumper. Do not crush or damage the air conditioning line. Please make sure that the air conditioning line does not rub on any metal parts after the bumper is mounted. Please note that the bumpers are made to fit tight to the truck but some trucks will fit with a little more gap or spacing than others. You can shim or adjust bumpers to your liking.</p>
	<p>There are two more factory studs that will take the factory flange nuts you removed earlier on the inside of the bumper. In addition to the factory studs there are two more 1/2in bolts that go through the bumper and frame to secure the lower section of the bumper to the frame. We only use a 1/2in washer on the inside of the frame not the bumper side for these bolts.</p>
	<p>This is the proper order of bolts off the frame of the clamp brackets. Please note the bottom bolt is with out a washer on the outside of the frame but on the inside of the frame it does have one.</p>



12.) There are also two 1/2in bolts that go through the side of the frame. The top one gets a 1/2in washer and a 2x2 backing plate on the inside of the frame and another 1/2in washers. The bottom bolt just gets a 1/2in washer on the inside of the frame. Note: some years will have plastic blocking plates that need popped out with a small screw driver.



2012-2014 installed.

Installation complete



2005-2011 installed.

Installation complete

Professional installation required by a competent mechanic. User accepts all responsibility for proper installation and maintenance of item, Demello Off-Road only warranties said item for manufacturing defects. Product is for Off-road use only.

Thank you for your business.

DEMELLO-OFFROAD