



INSTALLATION INSTRUCTIONS

Part Number
Item Description
Vehicle

DO-TN-WNC-200713
TUNDRA WINCH PLATE
2007-2013 Tundra

DEMELLO-OFFROAD

www.demello-offroad.com

12785 Magnolia ave
Riverside Ca 92503

phone: 1-951-735-4417
e-mail: Orders@demello-offroad.com

Kit contents	
1 – tundra front bumper winch plate	1 – installation guide
4 – 3/8in bolts	2 bumper winch supports L-R
4 -- 3/8in nuts	
8 – 3/8in washers	
4 – 1/4in bolts	
4 – 1/4in nuts	
8 – 1/4in washers	

Tools recommended for installation	
3/8" ratchet	Flat screw drivers
Torque wrench (0-80 lbf-ft)	Phillips screwdriver
Wrench	10mm, 14mm, 17mm, 19mm socket and wrenches
3in-6in 3/8in extension	
Grinder and cut off wheel or small metal saw	
Hint: A friend to help hold bumper and winch plate in place would be useful. Install winch and lights into winch plate before starting installation.	

Winch plate torque specs	
80lbs lbf-ft	30 N-m

Pre-installation procedure

Clean the front end of your tundra of any dirt, mud and debris, also tape off any area's that may get scratched while removing and installing bumpers. It's also important to have a little wrenching experience and aftermarket part expectations before installing this product. You can search youtube for others that have installed it and forums for pictures and reviews of the product. *please note that the winch plate is intended for the sr5 chrome bumper version shown below but will also fit the color matched bumper version as well with some minor modifications.

Installation procedure



Step 1.) Park Tundra onto level ground. Open hood release and pull up hood latch.



Step 2.) Remove the two black clips on either side on the fill piece under the head lights. Carefully use a small flat head screwdriver to pop the rivets out. You will re-use these clips, if you damage these clips, don't worry you aren't the first, most auto parts stores carry similar ones that will work.



Step 3.) Now that the plastic clips are removed you can gently pull on the light valance piece "straight out". NOTE Pulling it sideways may result in broken fasteners.



Step 4.) Now you have access to the top plastic bumper valance and assorted plastic clips remove the four plastic clips you now have access to, under the head lights.



Step 5.) Remove the bolt in the inner fender wheel well. This is a 10mm bolt and can be removed with a ratchet and socket.



Step 6.) You can use a Philips screwdriver or 10mm socket to remove the other bolt in the fender well.



Step 7.) There are also 4 bolts on each side underneath the headlights, these need to be removed and saved for re-installation.



Step 7 .)Note that the second set of bolts are kind of hidden behind the front bolts and lower.

Step 8.) Once all the bolts and clips are removed, you should now be able to remove the top piece. Note some vehicles may have extra clips or bolts. Be sure to check to make sure they are all removed before pulling on top piece.



Step 9.) Now that the top piece is removed, you will find 4 bolts on each side on the metal part of the bumper with a total of 4 bolts on top and then an additional 4 on the bottom of the bumper.



Step 10.) Make sure to twist and remove the fog light plug if

your tundra is equipped with fog lights. Also remove the sensor plugs before removing the bumper if you truck has parking sensors.



Step 11.) remove the clip that supports the fog light housing. You can access it from behind the wheel well.



Step 12.) Double check that all hardware and plastic clips are removed, remember some models may have more or less of each. Also be sure to check your wire connection for fog lamps and or parking sensors are free and clear of the bumper. Once you are sure the bumper is free you can now remove the stock bumper.



Step 13.) Flip the bumper over and start removing the bolts that hold the lower center plastic piece in place. There should be 12 10mm bolts that hold it in place.



Step 14.) There is a small piece of the bumper that some models may have to remove for the light housings to clear the factory bumper. You can use a small die grinder; hack saw or any other cutting tool you are comfortable with to remove this small piece.



Step 14.) Continued, the bumper should look like this on both sides once the piece has been cut and removed.



Step 15.) There is a small tab on each side that will need to be either bent flat out of the way of the winch plate or cut and removed. We recommend bending it out of the way.



Step 16.) You will also need to remove the factory aluminum bash bar from the frame. It is held on with 6 bolts total, 3 on each side. Use a 17mm socket and ratchet with 3-6in extension.



Step 17.) you will also need to remove the steel frame horn from the frame. It has 4 bolts for each one with a total of 8 for both sides. The bolts are 14mm as well and you can use a socket and ratchet or box end wrench.



Step 17.) (continued) your frame and front end of your Tundra should look like this now.



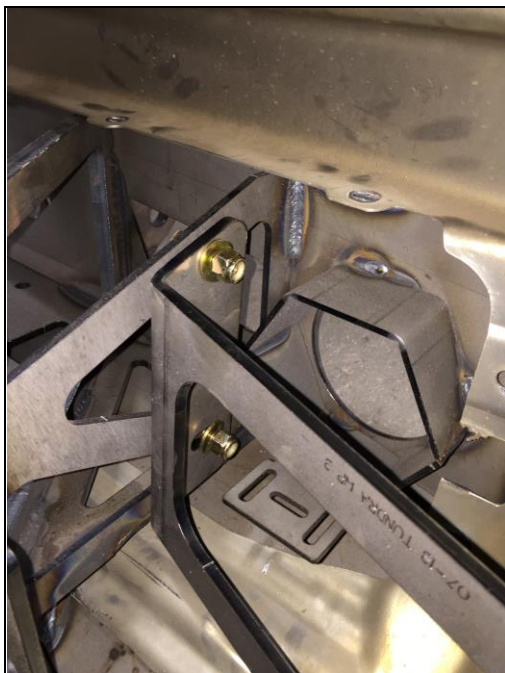
Step 18.) On your aluminum bash bar you will find two black brackets that mount on either side of the bumper. You will need to remove these from your aluminum bash bar. You will re-use these brackets.



Step 19.) Using the two black bracket pieces and the supplied bumper braces that come with the winch plate. There is a Left and a Right one. They only fit one way. Note in the picture how they go.



Step 20.) You are now ready to insert the winch plate into the center section of your lower bumper piece. This is the most difficult part of the installation and we recommend taking your time and possibly using someone else to hold the factory bumper while you install the winch plate. (shown with winch installed)



Step 21.) note how brackets mount and go around fog light holes. Snug down the brackets but do not tighten until winch plate is installed on truck.



Step 21.) Continued Note brackets placement.

Step 22.) Once winch plate is in bumper, installed re-use the factory bolts to bolt the black bumper braces back onto the factory bumper. There should be 4 bolts total on each side with a total of 8 bolts.



Step 23.) There are also two tabs on either side of the bumper use your supplied 1/4in bolts, nuts and washers to secure this section of the bumper.



Step 24.) The factory light housing also needs to use 1/4in bolts, nuts and washers to re-attach it as well.



Step 25.) install the bumper with winch plate installed. Remember to leave bolts loose so that you can adjust the bumper fitment. Reuse the factory 14mm nuts that you removed from the frame earlier to re-install the winch plate. Take your time to adjust the bumper and install correctly. Once the bumper is in place you will now take the left and right frame brackets and install them over the bumper brackets and attach to them to the frame.



Step 26.) once the lower part of the bumper is reinstalled you can now install the factory fill piece shown as white in the pictures. Reverse steps 1-8 to re-install the top valance piece. If you have any question, please feel free to call so we can walk you through it.

Thank you for your business.

DEMELLO-OFFROAD