



---

# INSTALLATION INSTRUCTIONS

---

Item Description  
Vehicle

Bolt-on Rock Sliders  
2007-2017 Tundra

---

## DEMELLO-OFFROAD

[www.demello-offroad.com](http://www.demello-offroad.com)

12785 Magnolia ave riverside ca  
92503

phone: 1-951-735-4417  
fax: 1-951-735-4644

---

### Kit contents

2 – bolt-on rock sliders (left and right sides)	1 – installation guide
8- 1/2in x2in bolts	14-1/2in nuts
6- 1/2in x1.5in bolts	1-m8 bolt
20-1/2in washers	1-5/16 lock washer
1-3/8inx1.25in bolt	1-5/16 flat washer
2-3/8in flat washers	1-3/8in lock nut
8- square washer plates	

### Tools recommended for installation

3/4" or 19mm wrench x2	Drill
13mm wrench	1/2in drill bit
14mm wrench	Jack stands and floor jack.
Hint: You will need the assistance of a friend to hold the sliders in place during installation.	

**Installer and owner assume all responsibility for drilling and modifying your factory frame. Sliders do require drilling to be used as sliders. To use as steps the sliders are complete bolt on.**

### Slider installation procedure



Dominator sliders shown for reference.



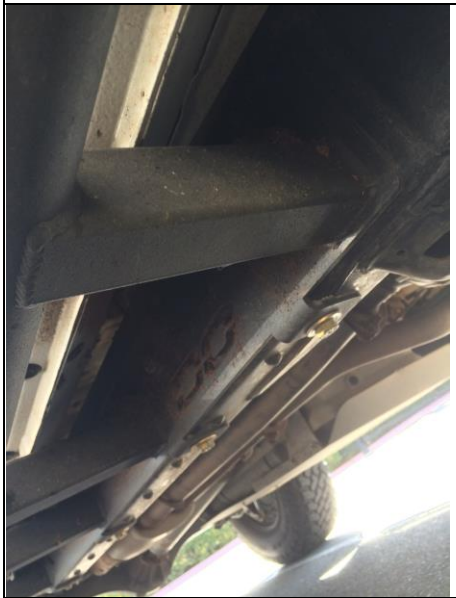
1.) Remove factory running boards or aftermarket steps before continuing with install. Please refer to install of those products for un-installation. (generic steps shown for example)



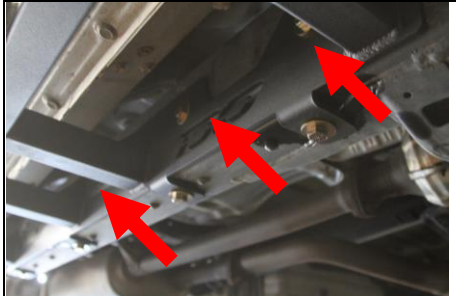
2.) lay out your DeMello Off-Road sliders and all their hardware. (sliders shown are hybrid bolt ons). In this picture the sliders are shown with the front of the sliders to the right of the picture. Meaning the bottom slider would be the passenger side and the top slider would be the driver side.



Note: This is the hardware and how it should look for one side. If you are missing hardware please contact DeMello off-Road immediately. 951-735-4417. If you have misplaced hardware the measurements and quantities are found above.



3.) Match up sliders to the truck. The DO logo on the frame goes towards the front of the truck. Gussets on legs should be toward the back of the truck.



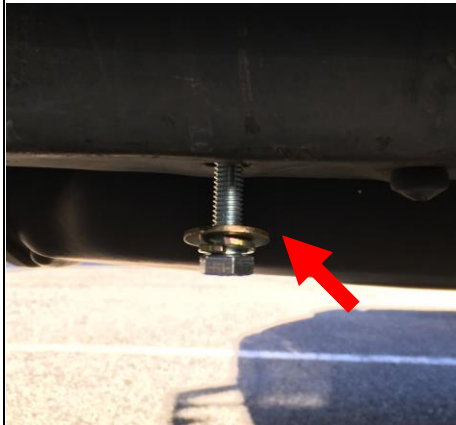
3.) insert the side bolts into the frame. These are the 2in x 1/2in bolts. With the washer on the outside of the frame. As shown below. There should be four per side.



Note: the 1/2in washer on both sides of the frame but with the plate on the inside of the frame. There is a 1/2in washer on both sides of the frame. The order should be bolt-washer-slider plate-frame-square plate-1/2in washer-nut.



4.) once all the side bolts are in place. With a friends help or floor jack, push the sliders up to the frame and tighten down the side bolts.



Note: there is an mm8 Bolt on the gas tank side of the frame that will screw into the threaded frame. The bolt should look like the one here with a 5/16in lock washer and 5/16in washer in that order. (be sure the factory threaded hole is free from debris and or rust. Use the 13mm wrench to tighten down bolt.



Note: On the passenger side there is a hole in the bottom of the frame for a 3/8in bolt to fit through securing the slider up to the frame. Make sure to use the supplied bolt-washer-washer-nut configuration shown in 3-notes section. Use the 14mm to tighten this bolt down.

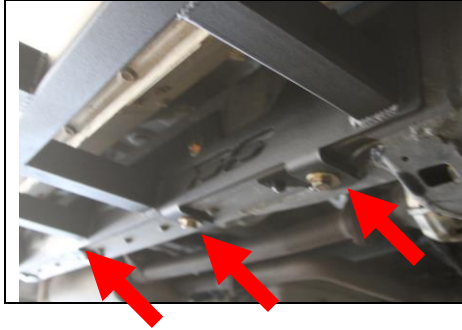


Note: note the configuration of the nut and washer on the inside of the frame for the 3/8in bolt.



5.) Now that the sliders secured to the frame and all the side bolts are tighten. This next step (not shown) requires you to use a drill and floor jack to drill the bottom holes of the frame. NOTE: this step is not necessary if you don't plan to use the sliders to hold the weight of the vehicle. If you just want to use them as steps you are done.

Using your 1/2in drill bit carefully line up the drill with the mounting holes in the bottom of the sliders. Wedging the drill between the floor jack and the frame apply a little pressure with the floor jack while drilling up into the frame. Be aware of pinch points if drill catches. We recommend this step performed by a experienced installer if you are not comfortable with it.



6.) Once all the holes are drilled you can insert the bolts in with the 1/2in bolt, then 1/2in washer through the frame. On top use the supplied 1/2in washer and nut. Tighten all bolts down and repeat for the opposite side when done.

**Thank you for your business.**

***DEMELLO-OFFROAD***