



# INSTALLATION INSTRUCTIONS

**Item Description  
Vehicle**

**Front Bumper  
2016-2017 Tacoma front  
Bumper Install**

## DEMELLO-OFFROAD

[www.demello-offroad.com](http://www.demello-offroad.com)

12785 Magnolia Ave  
Riverside CA 92503 Unit #1

phone: 1-951-735-4417  
fax: 1-951-735-4644

Please read in full before performing this installation. Bumpers are to be installed by trained professionals. If you think you can handle a bumper install after reading the instructions, then proceed with caution. Installer assumes all responsibility for installation and issues that may accrue during installation. You may also want to search youtube for others that have installed this bumper so you know what to expect. If you have any questions please e-mail [orders@demello-offroad.com](mailto:orders@demello-offroad.com)

We allow this installation without a winch to take roughly 3-4 hours. Results may vary on skill level and experience of the installer. The installation difficult level we put at 4 on a 1-5 difficulty level scale.

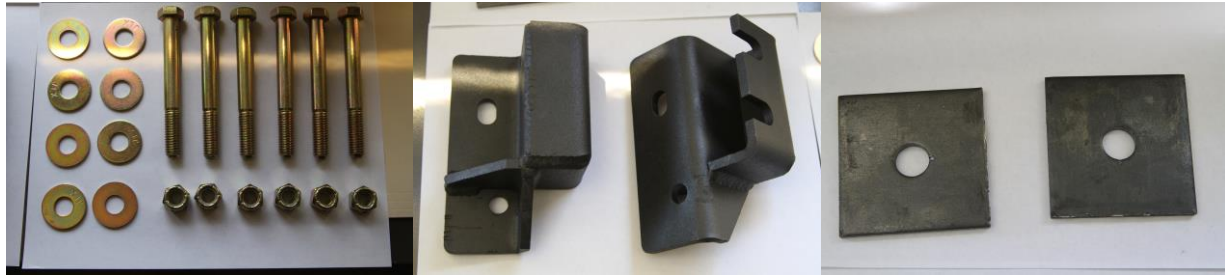
### Kit contents

1 – front bumper	8 – 1/2in washers
6 – 1/2in x 4in bolts	2 – square backing plates
6 – nylock nuts	1 – installation guide
2- clamp brackets	

### Tools recommended for installation

3/8" ratchet	10mm, 13mm, 14mm, 17mm 19mm sockets
Torque wrench (0-60 lb-ft)	Tin snips or cut off wheel grinder.
Flat head screwdriver	Cut off wheel or razor blade.
<b>Hint:</b> You will need the assistance of two friends to hold the bumper in place during installation.	

**Below is the hardware you should have received with this bumper.**



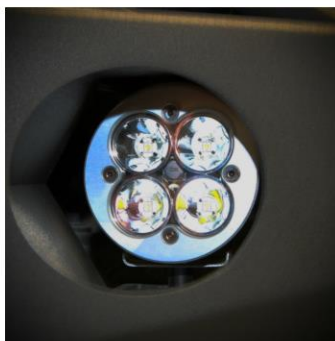
**Bolt torque settings**

6 – front frame assembly bolts 48 lb-ft where possible.

4 – side frame bolts 60 lb-ft

**SRS airbag equipped vehicles**

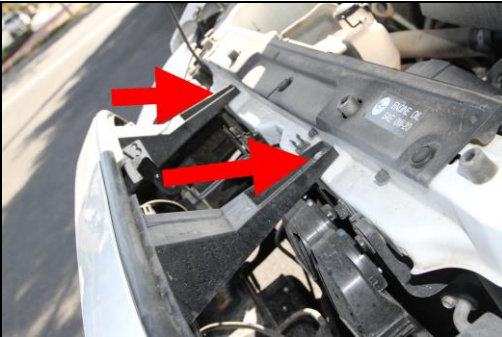
This bumper has not been tested with SRS Airbag equipped vehicles and may or may not adversely effect the operation of SRS Airbag systems. By installing this bumper you accept all responsibility and risks associated with the effect this bumper may have on the SRS Airbag system in your vehicle.



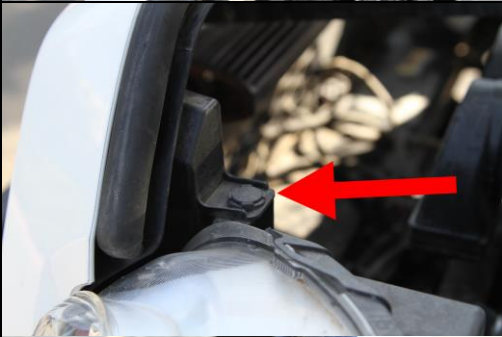
## OEM bumper removal procedure



1.) Park your truck on level solid ground. Set the parking brake and get out of the vehicle before you start this installation. You can now pull the lever to release the hood latch. (see owner's manual for proper operation) . Secure the hood with the supplied hood support from factory.



2.) Remove the two bolts securing the factory grill to the radiator support. These can be removed with a 10mm socket and 3/8in ratchet. We do not recommend using pneumatic or electric impacts as they may damage the hardware. Do not discard these bolts as you will re-use them. If you can't see the bolts in the picture, please refer to the e-mailed instructions as the pictures may be clearer to see. You can also find many pictures online by Googling "2016 Tacoma grill removal"



3.) There are two clips on both sides of the grill that also need removed, you will notice that there are 4 lower depressions in the clip, you can take a small screw driver and "gently" pry it up from there. If you need further help, please there is a video online that shows a similar clip being removed.

<https://www.youtube.com/watch?v=NAwWxO6ufBg>



4.) press clips

The grill is also held on with two clips pictured below on the left. Push down on these clips gently while applying pressure to pulling the grill towards you. The same video shows the full process of removing the grill if you are having any trouble.

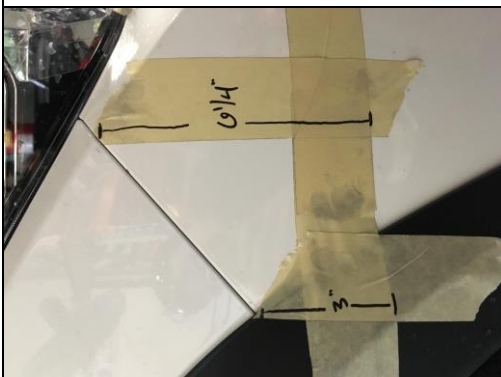
<https://www.youtube.com/watch?v=NAwWxO6ufBg>

Be extra careful with this step as it's easy to break these tabs and a toyota parts department is the only reliable place to source them.



5.) The next step is the cutting of the factory bumper. Be sure to follow the rule of measure 3 times cut once. We tape off the surrounding area for cutting with masking tape. You want to continue the line straight across from under the bumper cut line, shown on the left with the left arrow o. Follow that line across to the fender flare.

**NOTE:** This task should be performed by an experienced installer and is NOT recommended for you to do this without experience. Or a healthy amount of confidence.



6.) Here you can see the measurements of where we suggest to cut the bumper. 6 1/4in from the corner near the light as shown. And 3in from the corner.



7.) Here you can see the measurements for under the headlight. Measure 6in from the bottom corner of the light and 5 3/4in from the location just under the light as shown. Again, the rule of thumb is measure 3 times cut once. You can also follow the line just above the fog light as a reference point of where to cut.



8.) Shown again is the line where the bumper has been cut. (not shown) we use a small cut off wheel to cut this portion of the bumper. You can also use a dermal or air saw as well. Shown also in the picture is the fog light removed which you don't have to remove, but if you wish too you can.



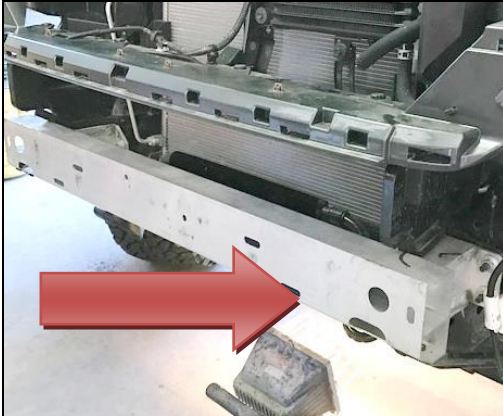
9.) This is how the bumper will look with the lower section cut off. Not shown in this picture are the inner fender liners which will also need to be trimmed. Trimming the inner



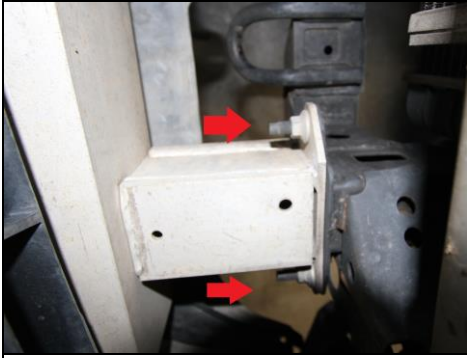
Again shown with the cut zoomed in.



10.) To trim the inner fender plastic we recommend a box cutter for the cleanest and simplest method. If you would like further explanation, please see our video of the FJ bumper install that shows the cutting that is done of the inner fender lining. <https://www.youtube.com/watch?v=dF-B7inrDyU> at 4min 48seconds into the video it shows heating the box cutter which isn't necessary but does make the job easier.



11.) With the lower section exposed you can now remove the aluminum crash bar on the frame. The crash bar is held to the frame extension by 3 14mm nuts per side. These are removed and set aside.



12.) The crash bar has 6 bolts total 3 per side holding it on. You can now remove those and discard the crash bar. There are two nuts on the outside and one on the inside. (different crash bar shown but same method applies. In our video of the FJC bumper install on <https://www.youtube.com/watch?v=dF-B7inrDyU> you can see this action done as well. 2min 55 sec into it.



13.) Your frame should be clear like shown in this picture. Make sure to pay attention to the AC line and Oil cooler so that it clears your bumper. You may have to carefully "hand bend" those items out of the way to clear the bumper. This is the most important part of the whole install and you should fully be aware of area's that may contact your bumper when you install it. Some trucks are slightly different but there is enough room to "gently" bend the AC line and Oil cooler out of the way if necessary. Please proceed with caution.

14.) The next step is the easiest but does require some patience and care. Locate your bumper and with the help of a friend slide it onto the frame and the existing factory studs that protrude from the frame. Be careful not to scratch the body or paint of the fenders or flares.  
Helpful hint: Use masking tape (not supplied) to tape off the paint and exposed edges so that you can avoid damaging the paint of the Truck and or bumper when sliding the bumper into place.



15.) with the bumper in place, locate these brackets. Note the order in which the bolts, washers and backing plate go on the frame and on the bumper.



16.) Slide the brackets "**OVER THE BUMPER**" and the frame, clamping the bumper to the frame. **Some** tacoma's will have plastic caps in the frame that will need to be removed so that the 1/2in bolts can easily pass through the frame. Put all the hardware in place secure it down but do not fully tighten so you can adjust the bumper to your liking. There should be two factory outer nuts preside shown here as well as two inner nuts (not shown) one on each side holding the bumper down.

### Bumper installation procedure



17.) Here is another shot of the bracket showing how the bracket clamps the bumper to the frame. Again you should have 6 total factory nuts holding the face of the bumper to the Tacoma frame. You will also have two 1/2in bolts that pass through the frame the opposing direction as shown here with the nuts and supplied washers in the order shown in step #15.

18.) When adjusting the bumper to how you like it on the truck be sure to leave sufficient gap under the plastic that you trimmed for the frame and bumper to move. Rough roads will cause the frame and bumper to move around and contact the body and plastic if it is too close.





19.) when the bumper is installed be sure to stand back and take a picture and post online for all to enjoy;) If you have any suggestions for our install instructions that may help others in the future be sure to shoot us over a e-mail so that we may better our instructions for the next guy.

Professional installation required by a competent mechanic. User accepts all responsibility for proper installation and maintenance of item, Demello Off-Road only warranties said item for manufacturing defects. Product is for Off-road use only.

**Thank you for your business.**

***DEMELLO-OFFROAD***