



INSTALLATION INSTRUCTIONS

Item Description
Vehicle

Bolt on sliders
2010- 2021 4runner

DEMELLO-OFFROAD

www.demello-offroad.com

12785 Magnolia ave Riverside Ca 92503

phone: 1-951-735-4417

Kit contents

2 – Sliders driver and passenger	22 – flat washers
22 -- M8 metric bolts	
22 – 5/16in lock washer	1 – installation guide

Tools recommended for installation

3/8" ratchet	12mm, 13mm, 14mm
Torque wrench (0-60 lb-ft)	
Flat head screwdriver	Pliers
Hint: You will need the assistance of two friends to hold the sliders in place during installation.	

Bolt torque settings

2 – side frame bolts 60 lb-ft	
-------------------------------	--



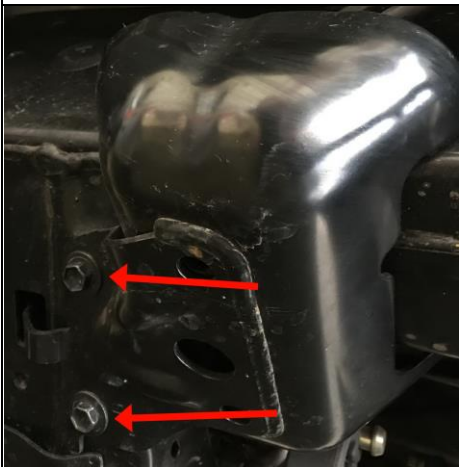
These instructions are intended for a mechanically inclined individual. Must have basic understanding of hardware and tools to complete this installation. If you have any questions please e-mail Orders@demello-offroad.com



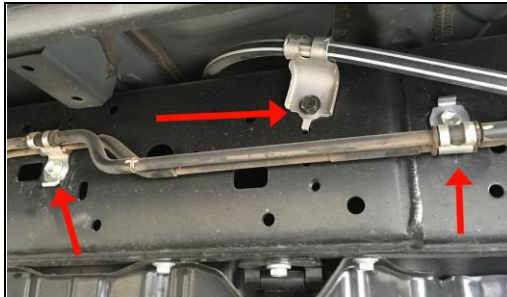
- 1.) Make sure you have two sliders both a left and a right or a driver and a passenger. The driver side bolt on slider will have one leg that is round tube instead of the square tube and the bracket will have a section missing. (hybrid version shown)



- 2.) If you have a sr5 or limited-edition model, at this point you will need to remove your lower valance and or your running boards on below the doors. You will need to open both doors and find the bolts and plastic pop rivets that hold them to the body. Please refer to your owner's manual or service book to remove these items. Trail editions and late model sr5's should not need to remove these pieces.



- 3.) If you have a "Trail edition" or model that is equipped with the XRS system and the additional hardware on the frame you will need to remove both skid plates that protect this unit on your driver side frame rail..



4.) You will then need to remove any bolts that secure the KDSS lines in place as well as your e-brake cable. Do not dis-guard any of it as it gets re-installed.



7.) Now with the help of a friend carefully slide the sliders up the frame from the bottom starting a few inches to the rear so that you can slide the cut away section of the slider plates around the two lines that go under your frame. At the same time you will need to pry the control unit and related lines away from the frame then slide mounting plate behind it. This process is best done with two people and will take some time and patients to get the brackets behind the control module. (module lines shown is where the cut slider plate goes around)



8.) once the sliders are against the frame you can start hand tightening some of the M8 bolts into the frame to hold the sliders in place. Leave them loose as you may need to slide the bracket forward or back to line the bolts up. Some times you have to have move the sliders around to get all the bolts in. Have patience and take your time.



9.) At this point you should be able to re-insert the bolts that hold the control module to the frame. **Note: not all 4runner models will use all the supplied bolts provided. Use as many bolts as you can use on the frame.** Once all bolts are in the frame you can slightly adjust the sliders and then tighten them down.



10.) Repeat the same steps for the passenger side that tightens the bolts till they are firm. Note that all sliders and bolts will use all the supplied bolts provided. Use as many bolts as you can use on the frame.

OPTIONAL

10.) While welding is not necessary for your bolt on 4runner sliders. If they are going to see hard heavy off road use we recommend putting a small weld every few inches across the bottom of the mounting brackets.