



---

# INSTRUCTION

---

**Item Description**  
**Vehicle**

**Front bumper**  
**2010- 2020 4runner**

---

## DEMELLO-OFFROAD

[www.demello-offroad.com](http://www.demello-offroad.com)

12785 Magnolia ave  
Riverside Ca 92503

phone: 1-951-735-4417  
orders@demello-offroad.com

---

### Kit contents for bumper

2 – frame brackets driver and passenger	
2 -- M8 metric bolts	
2– 5/16in lock washer	8 –M10 metric bolts
2– 5/16in washer	8 – 3/8in washers
2– M12 Metric bolts	1 – installation guide
2– 1/2in washers	

### Tools recommended for installation

3/8" ratchet	12mm, 13mm, 14mm, 10mm
Torque wrench (0-60 lb-ft)	Air saw or die grinder
Flat head screwdriver	Pliers
Hint: You will need the assistance of two friends to hold the bumper in place during installation.	
Air saw or die grinder	Healthy dose of common sense☺
Masking tape	

### Bolt torque settings

2 – side frame bolts 60 lb-ft	
-------------------------------	--



These instructions are for your 2010-2020 Toyota 4runner front DeMello Off-Road bumper. Please verify that you have all the supplied hardware and parts before you begin your installation.

It is important to remember that the bumpers are made with a certain amount of adjustment in them to help accommodate the variances from SUV to SUV. There is no guarantee with any off road bumper that the bumper will fit perfectly to the body, as Toyota bodies are mounted on frame with soft body mounts that can vary from vehicle to vehicle and over time can change.

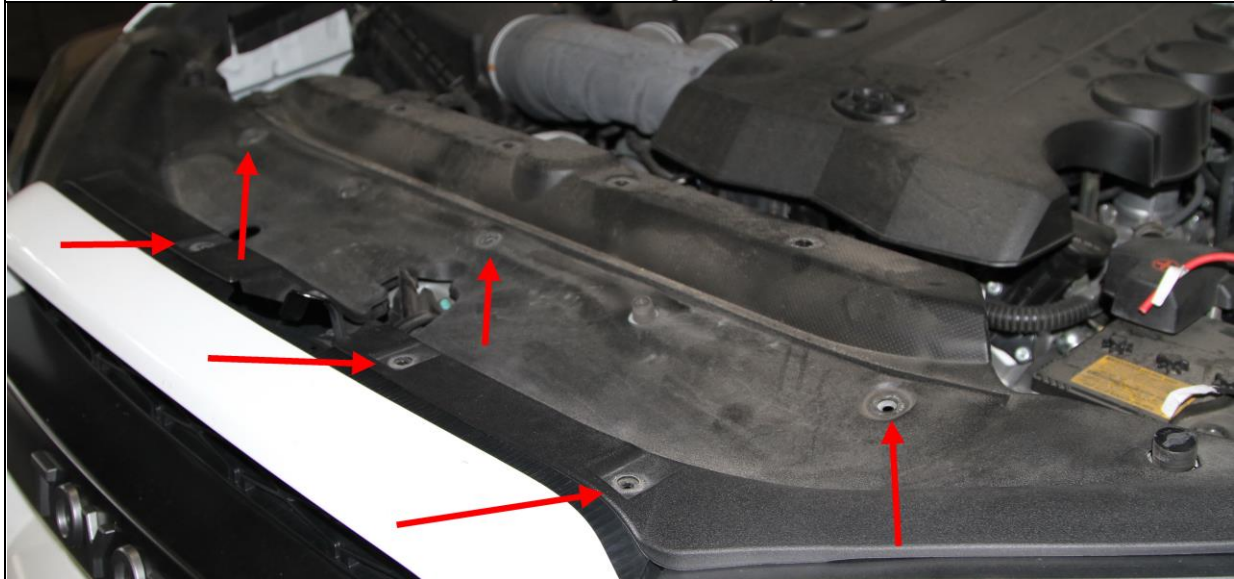
The level of install of this on a scale of 1-10 I would put at a level 8 because of the cutting. If you are unsure of your skill level or un-comfortable with the in-stall we highly recommend you contact a local 4wheel drive shop.

Please read the directions completely before you start the install and make sure you have all the hardware and proper tools for the job. DeMello off-Road is not responsible for poor installation or wrong parts, please verify you have the right product before you install it or schedule for installation.

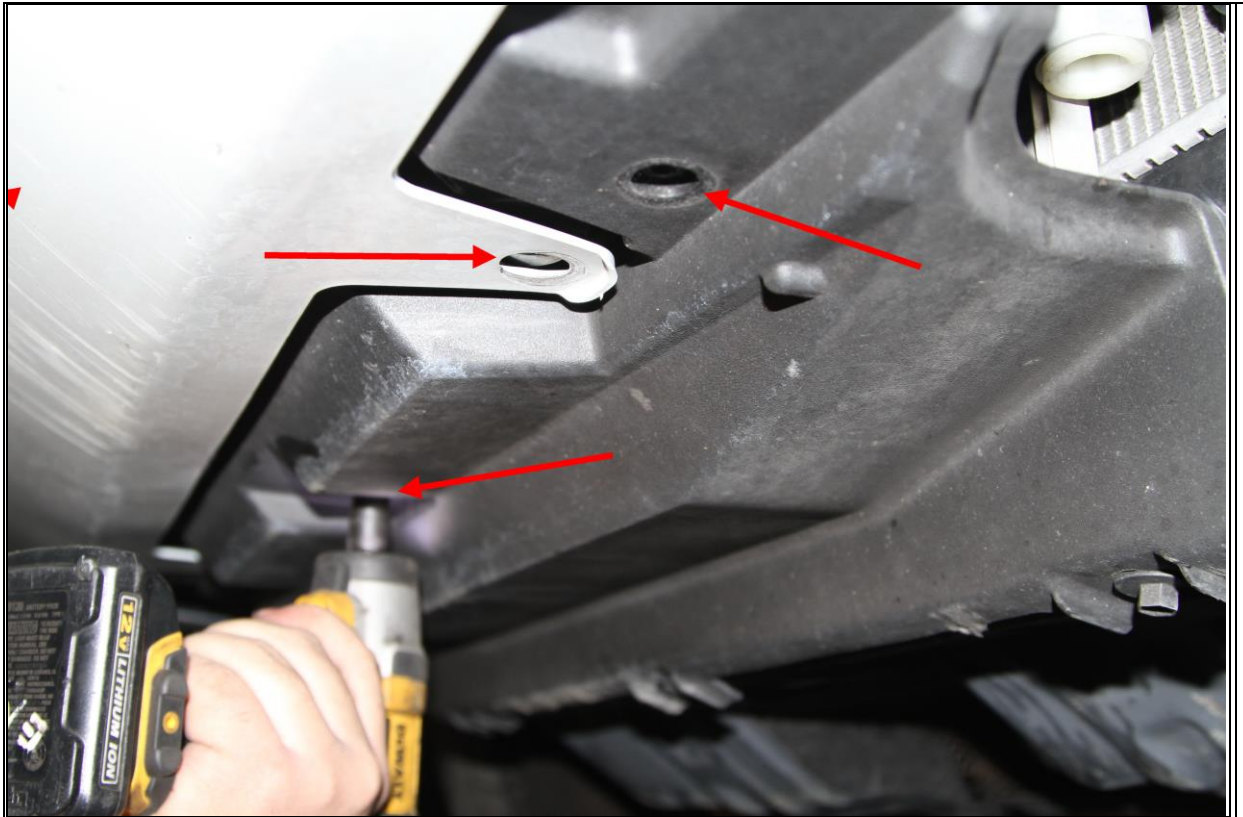
Any questions or issues should be e-mailed to [orders@demello-offroad.com](mailto:orders@demello-offroad.com) for the fastest response.



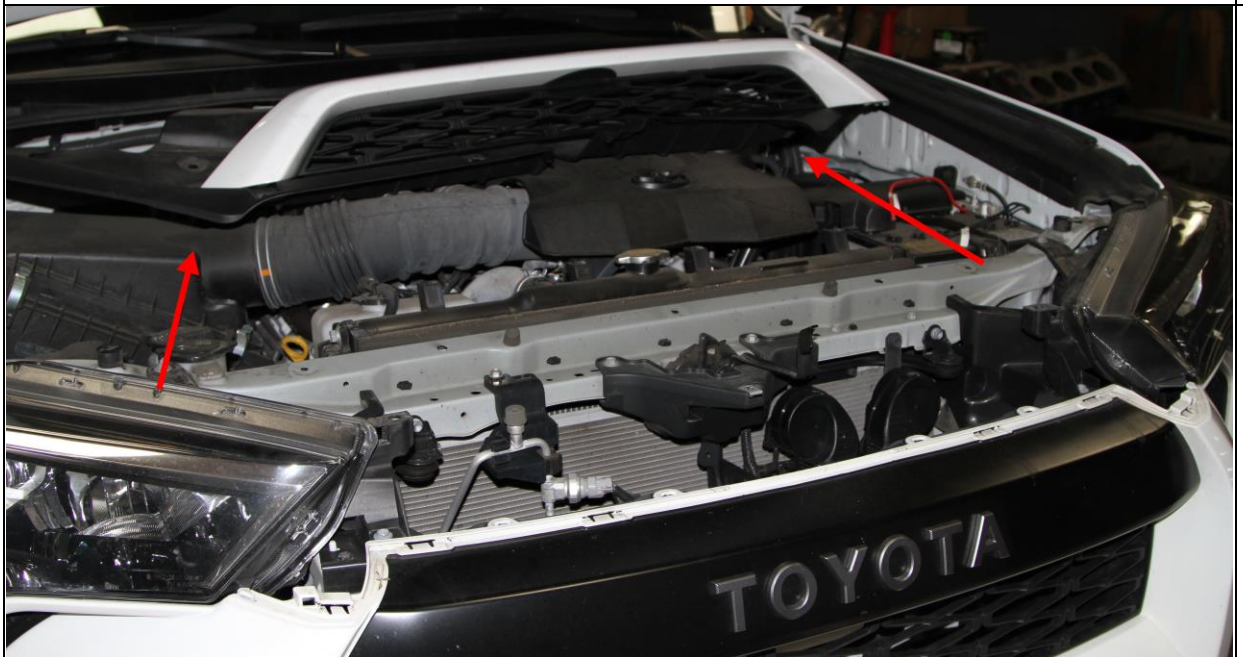
Step 1.) It is important to start on a nice level ground with your 2010-2020 Toyota 4runner. This one shown is n sr5 with TRD pro grill. Some models such as the limited and or early models will have different grills. Again, if you are unsure on the install please have a professional install it. Please also note in models with the driver assist sensor in the lower grill that you will no longer have that feature.



Step 2.) Start by removing the bolts and clips found once you open the hood and expose the radiator plastic cover. The bolts should be a metric 10mm small hex bolt. Different models have a different combination of bolts/clips. If you are unfamiliar with the clip removal process, please refer to "clip removal" via google search.



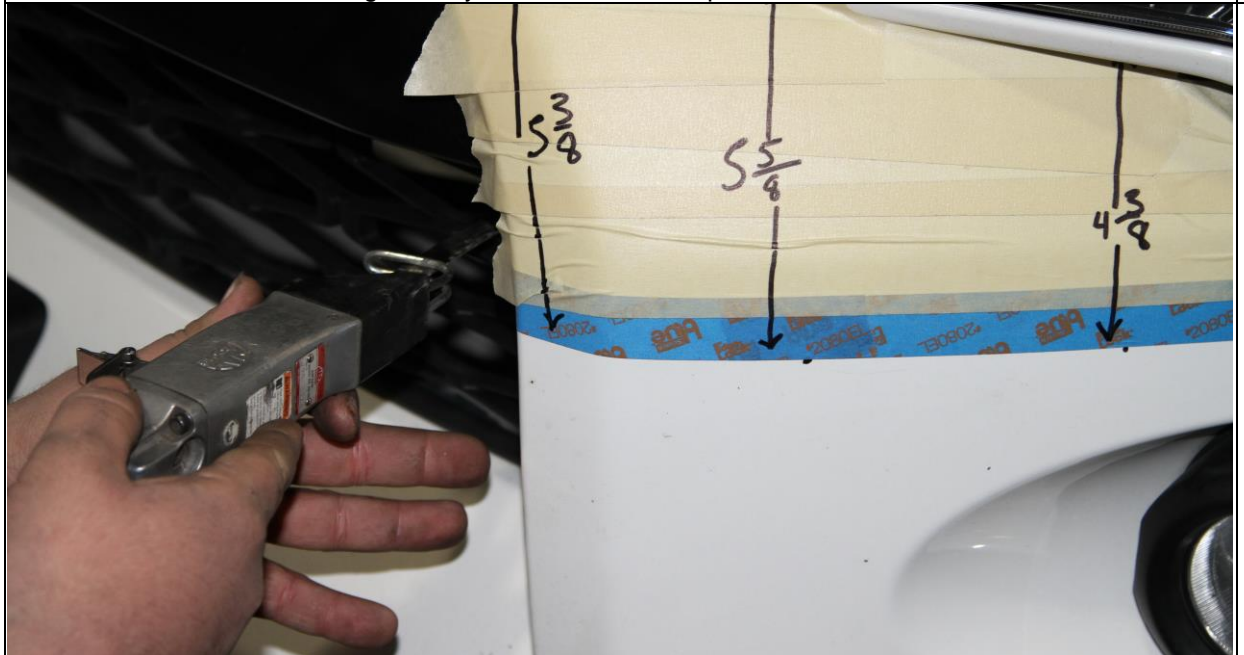
Step 3.) You will also find roughly 6 10mm hex bolts on the bottom of the bumper under the 4runner attached to the skid plate as well as 2-3 more in each wheel well that hold on the front bumper. Again models vary from year to year for how many total bolts and fasteners are used.



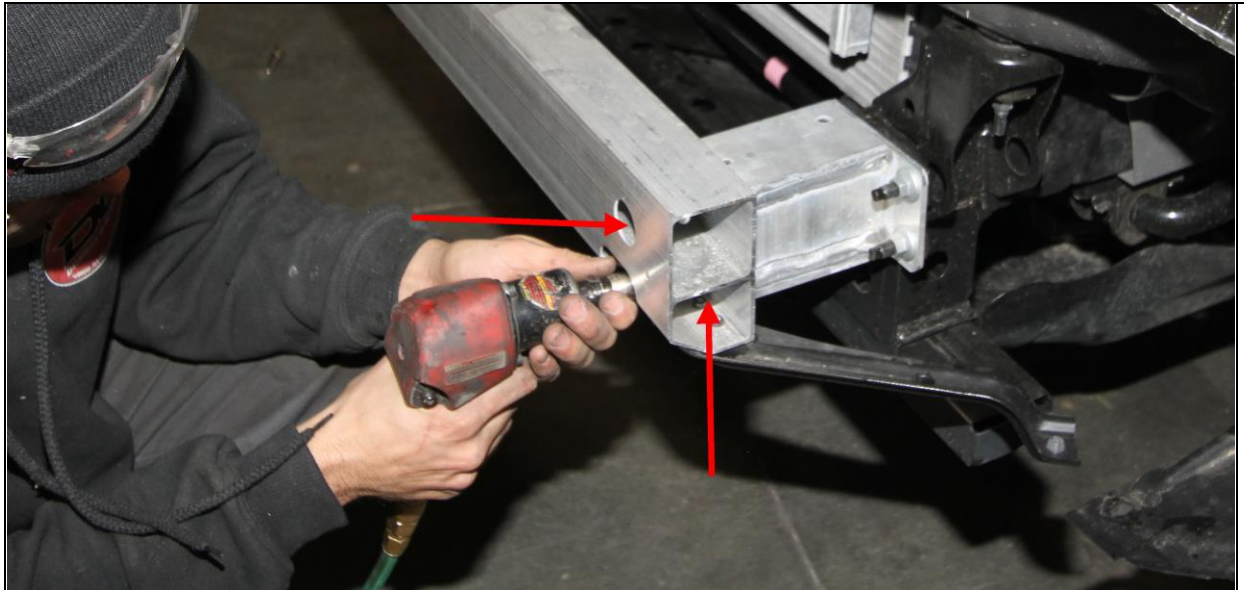
Step 4.) Now that the bumper is unbolted you can remove the top section of the grill along with the plastic radiator cover. Exposing more access to the area behind the grill.



Step 5.) You now need to lay out your masking tape. Basically, you are going to be doing a straight cut from the already factory line of the fender to bumper shown above with a red arrow. We also include measurements of the line along the way in reference to the points shown above.



Step 6.) You can now use your air saw as shown above starting from the inside of the bumper in the grill and cutting towards the fender. BE aware of anything behind the bumper that may catch on the saw and damage it. It is good at this time if you have factory fog lights to unplug them and make sure the harness is out of the way before you cut. Remember measure 3 times cut once! We use a small air saw but a die grinder with a cut off wheel works as well too. Just remember to always use the proper safety gear including safety glasses.



Step 7.) Once the bumper has been completely cut off and removed you will see the bash bar exposed. Your bash bar will have two 14mm nuts holding on the front section of the bar. Remove those two nuts and remove the bar. As shown below. (not this is a Tacoma front end but the process and the work is still the same)

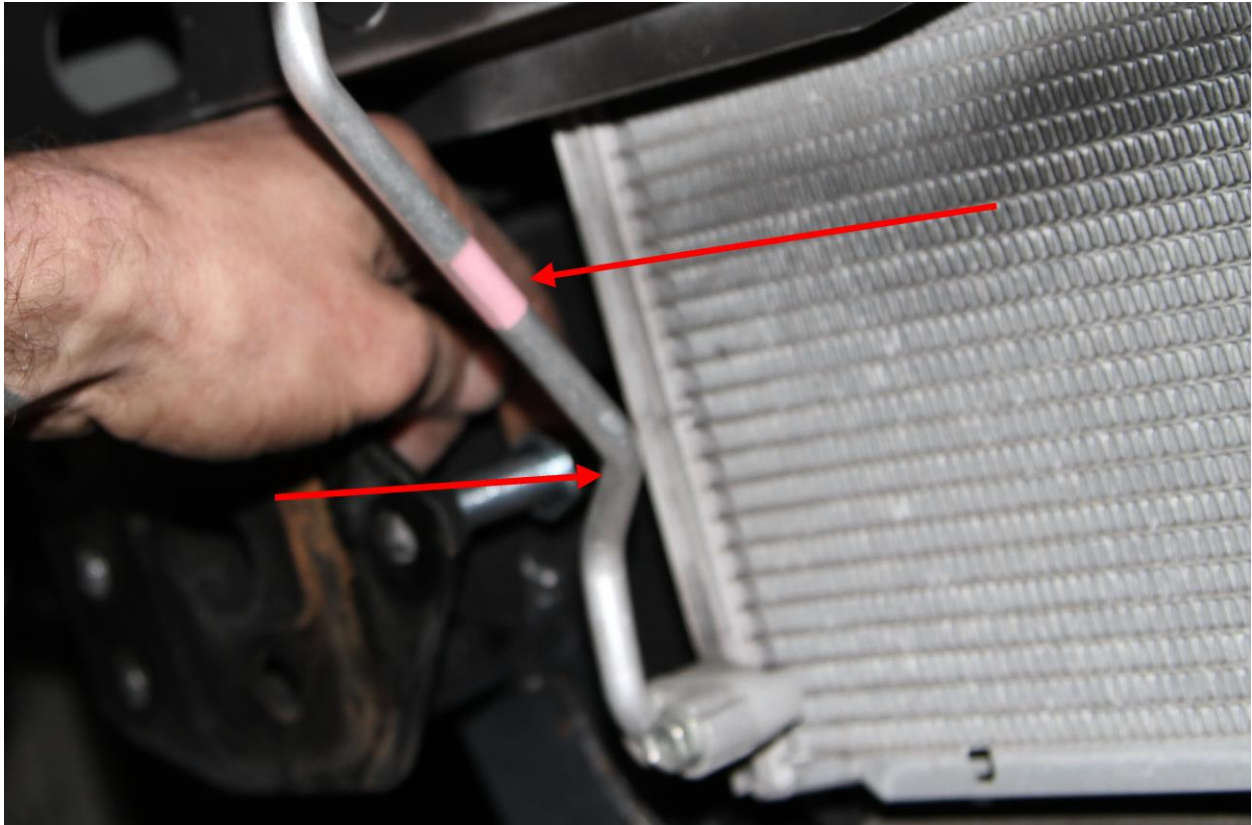




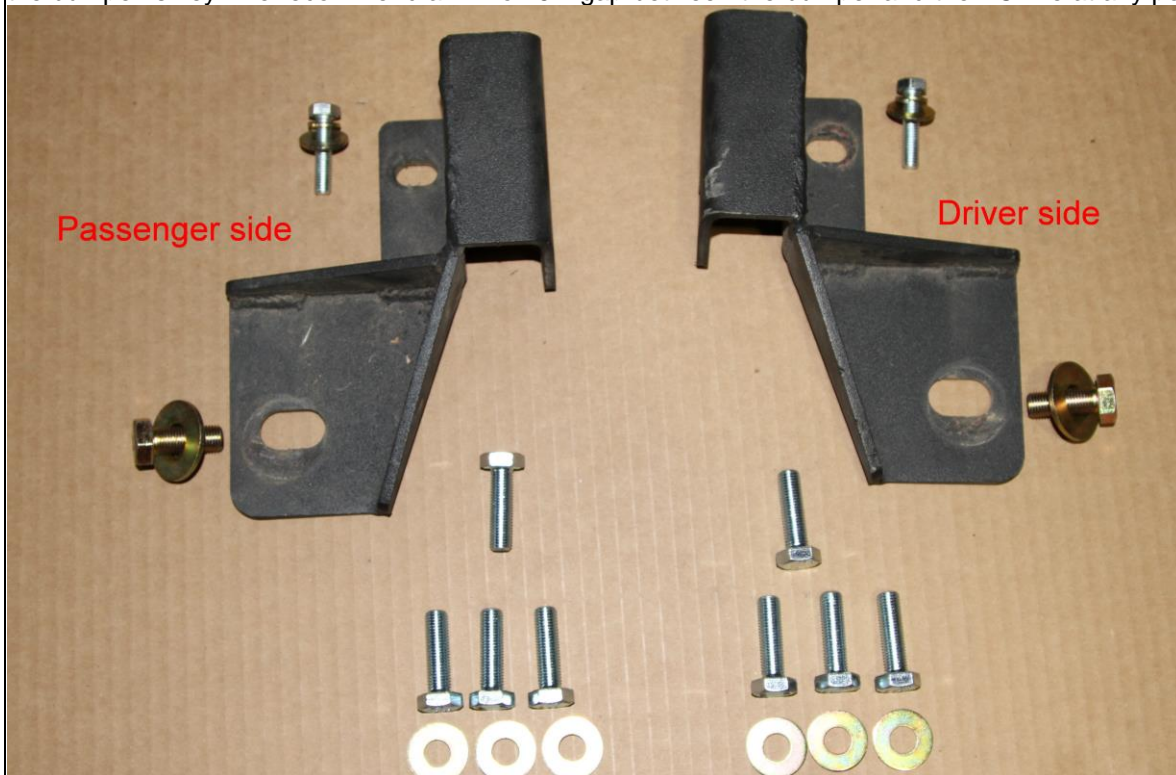
Step 8.) you will also remove the frame horns from the front end as well there will be 4 bolts per side shown with the red arrows. (not this is a Tacoma front end but the process and the work is still the same)



Step 9.) you can see here we have reinstalled the upper grill section, just reverse the steps in step number 2-4. We also recommend using a little black spray paint to paint over the sections of the exposed area if you have a white vehicle or light-colored vehicle like the one shown. It helps hide any of the exposed pieces once the bumper is installed.

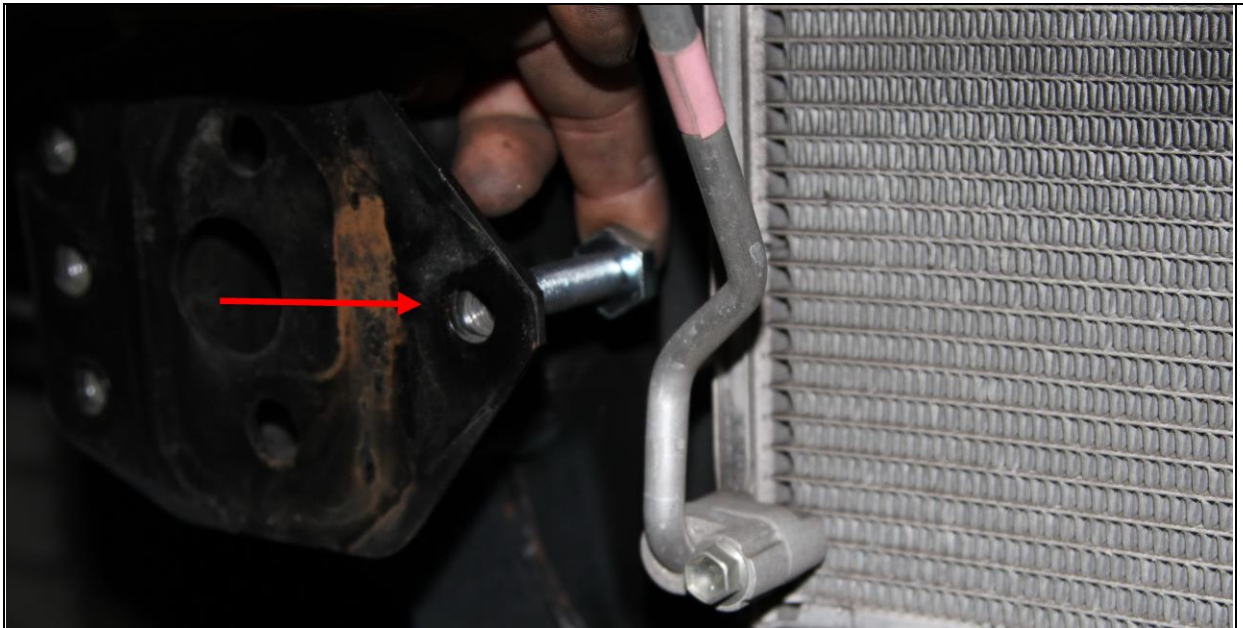


Step 10.)The most important part of any aftermarket bumper install on a Toyota is to make sure the AC line is going to be free and clear of the bumper it self. "CAREFULLY" bending the line so that it clears the bumper is key. We recommend a min of .5in gap between the bumper and the AC line at any point.

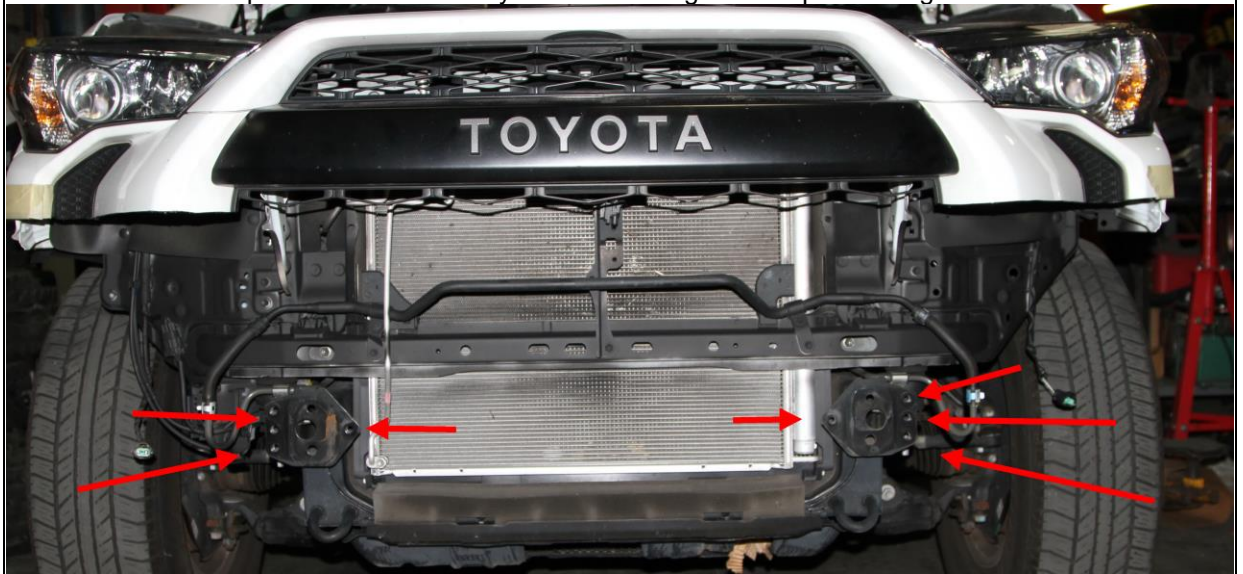


Left and right frame brackets shown above.





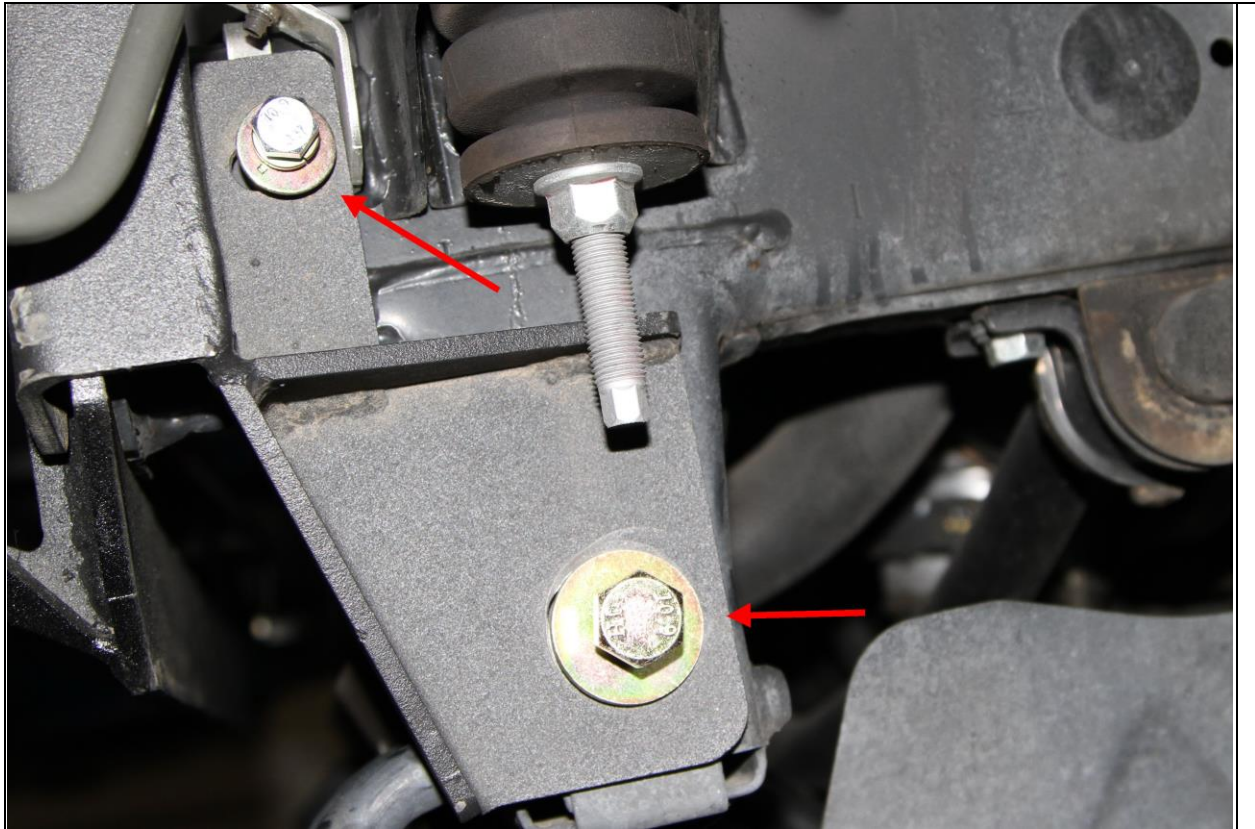
Step 11.) With the front-end exposed use two of the m10 metric bolts to go in backwards from the rear to the front on just the two inside holes. This is the passenger side. Repeat on the drive side these studs will be what the bumper slides onto when you are installing the bumper making it easier to install.



These are the all the mounting points forward facing on the 4runner that you will be using.



Step 12.) You can now with the help of a friend slide the bumper onto the two studs you installed being careful not to scratch the 4runner or mess up the bumper. Two or even three people is ideal for this part of the install to ensure no damage is done to either bumper or the vehicle. Once the bumper is in place the side brackets can be slid over the bumper clamping the bumper to the frame. Slide the brackets over the bumper mounting points do not put the brackets behind the bumper they will not fit.



Step 13.) Use the remaining 3 10mm metric bolts and washers, 3 on each side of the frame (not shown here) and snug them down bringing the bumper closer to the truck. Holding the bumper in place while this is done is ideal. You can then slide the side bolts one m12 metric in the bottom shown above and one .8 in the side both with washers but only the m8 gets a lock washer. Once all bolts are in place including the 6 forward facing into the front and the two side bolts you can adjust the bumper and tighten them down. You can also at this time use the remaining m10 nut on the front of the bumper on the two inside studs you slid the bumper onto earlier.

It's Important to note that some vehicles can be different and you may have to adjust the bumper to fit the vehicle. Some even have to shim the factory body mounts to make up for over compressed factory body mounts. If you have any questions please e-mail us a [orders@demello-offroad.com](mailto:orders@demello-offroad.com)



You are now ready to go enjoy your DeMello off-Road 2010-2018 4runner bumper. If you have any question please call us Monday-Friday 9am-5pm for details on how to install your bumper.