



INSTALLATION INSTRUCTIONS

**Item Description
Vehicle**

**Front Bumper
2007-2016 Toyota FJ Cruiser**

DEMELLO-OFFROAD **Video on line now available.**

<https://www.youtube.com/watch?v=dF-B7inrDyU>
www.demello-offroad.com

12785 Magnolia ave suite 1
Riverside CA 92503

phone: 1-951-735-4417
fax: 1-951-735-4644

Kit contents	
1 – front bumper	6 – 3/8in bolts,washers and nuts
2 – m12 bolts, washer	
2- m8 bolts and washers	
2 – frame re-enforcement brackets L & R	1- installation guide

Tools recommended for installation	
3/8" ratchet	10mm, 13mm, 14mm, 19mm sockets
Torque wrench (0-60 lb-ft)	
Flat head screwdriver	Pliers
Hint: You will need the assistance of two friends to hold the bumper in place during installation.	

Bolt torque settings	
6 – front frame assembly bolts 50 lb-ft	4 – side frame bolts 60 lb-ft

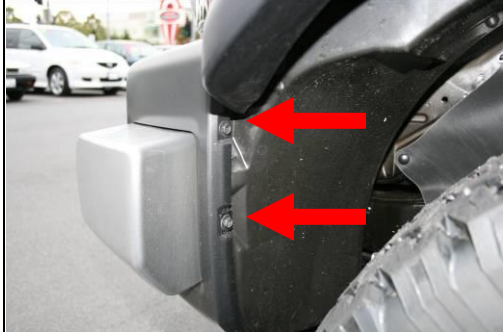
SRS airbag equipped vehicles

This bumper has **not** been tested with SRS Airbag equipped vehicles and may or may not adversely effect the operation of SRS Airbag systems. By installing this bumper you accept all responsibility and risks associated with the effect this bumper may have on the SRS Airbag system in your vehicle.

OEM bumper removal procedure



1.) Remove **ALL** of the factory screws along the bottom of the front bumper corners. Different models may have more or less screw/bolts than shown. Refer to factory screw/bolt removal if it does not match what is shown here.



2.) Remove the screws located at the front of the wheel wells.



3.) Remove the grill.

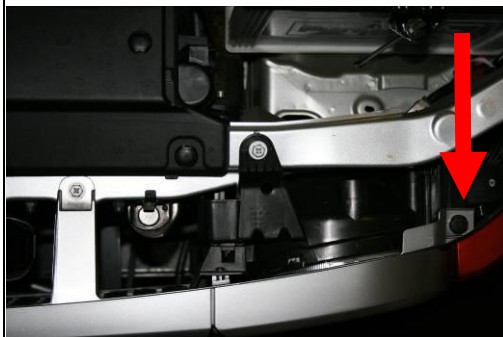
Remove the two screws located at the tabs on the top of the grill.

Remove the two snap rivets in the top outer edges of the grill.

Hint:

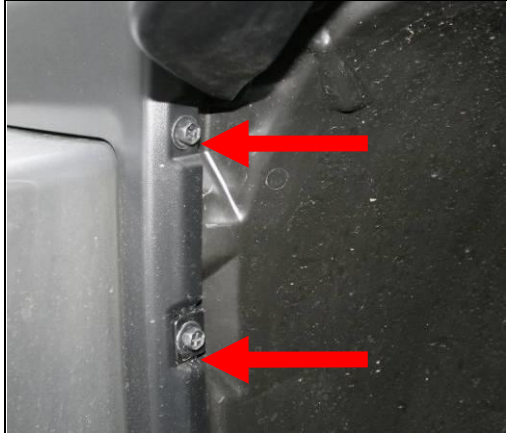
The grill is held on with clips from behind. Gently pull the top of the grill forward to release the top plastic clips. Then pull on the bottom of the grill to release the bottom plastic clips.

A flat head screw driver is helpful in releasing the middle and bottom clips.





4.) Remove all of the snap rivets along the top of the bumper by gently prying upwards on the center button with a flat head screw driver.



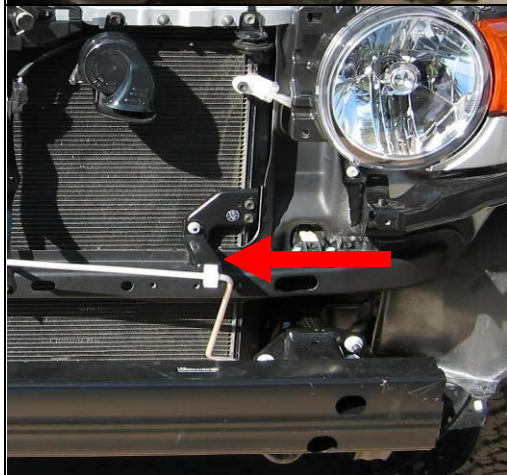
5.) Remove front bumper cover from vehicle. Gently pry the outside lip of the bumper cover over the raised plastic mounting screw location inside the wheel well area.

Hint: Gently insert a screw driver between the bumper cover and the wheel well plastic where the arrows are pointing in the image to the left.



6.) Remove front bumper support bar by removing the 8 flange nuts.

Note: knock out the outside 3 studs per side with a small sledge or hammer. Use a 45° angle impact to knock the studs loose. If you start to bend the factory bracket holding them you are hitting them at the wrong angle.



7.) Using a 10mm socket remove the air conditioning bracket nut and unclip the bracket from the air conditioning line.

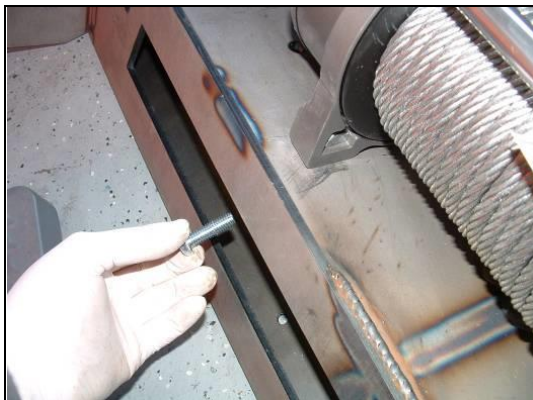
Note: Please use caution when removing the bracket, so as to prevent any damage to air conditioning line. Please use caution when mounting you bumper. Do not crush or damage the air conditioning line. Please note that the AC line will have to be carefully bent for the bumper to clear. If you are un-sure of this please seek professional giddiness or help. There is also a black wire loom that is included for extra protection.



8.) Remove the factory side bumper supports and the front cross bar that span the distance across the front between the side supports.

Note: These parts are not used during the installation of your new Demello front bumper.

Winch installation procedure (optional steps)

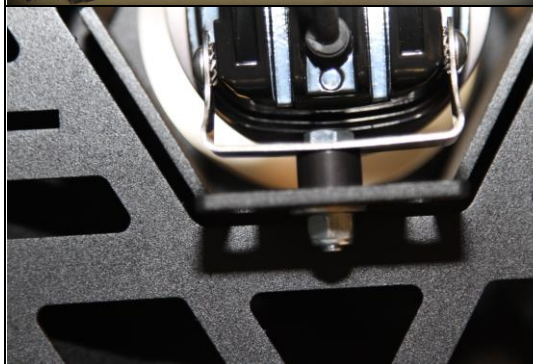


9.) Install winch. Place your winch on the mounting plate on the back of the bumper. Using the mounting hardware that was supplied with your winch, bolt the winch to the mounting plate. Please ensure that your winch mounting hardware is tightened according to the manufacturer's specifications.

Hint: We suggest that you install your winch on the bumper prior to mounting the bumper to your vehicle.



10.) Install winch controls. There are many different styles of winches and controllers to make a one size fits all. But there is a significant amount of space inside the bumper to mount a control box in several different locations. Find the best location that fits your needs the best.



Note: if installing lights this is the time to do it. Some lights will require a spacer like the baja designs do, shown in picture. Check to make sure light is centered in the hole before going further.

Bumper installation procedure	
	NOTES: Before installing bumper make sure to carefully bend the AC line so that the bumper does not contact it on installation. Also install the supplied wire loom onto the AC line. This loom is not designed to allow the bumper to rub the AC line it is just an added layer for protection. Make sure the AC line does not contact any bumper surfaces during or after installation!
	Notes: Carefully slide bumper onto frame, be aware of all body parts and metal brackets. The bumper should slide onto the center studs of the frame that remain easily. But sometimes the studs may need to be gently bent for the bumper to slide on easily.



11.) Once the bumper is slid on the bumper installed you can now use the supplied reinforcement brackets to clamp and secure the bumper to the frame. The supplied M12 metric bolts thread into the bottom portion of the bracket and the supplied M8 threads into the upper portion of the bracket. You will also run the 3/8in bolts through the bracket, bumper and frame as shown above.

Note: cleaning the factory holes out with soap and water and even a little lubricant is a good way to ensure no cross threading or difficulties tightening the bolts.



12.) Once the brackets are installed you can now level off the bumper and tighten the brackets. A floor jack is helpful for this or a good friend to hold the bumper in place while you tighten it down.

Professional installation required by a competent mechanic. User accepts all responsibility for proper installation and maintenance of item, Demello Off-Road only warranties said item for manufacturing defects. Product is for Off-road use only.

Thank you for your business.

DEMELLO-OFFROAD